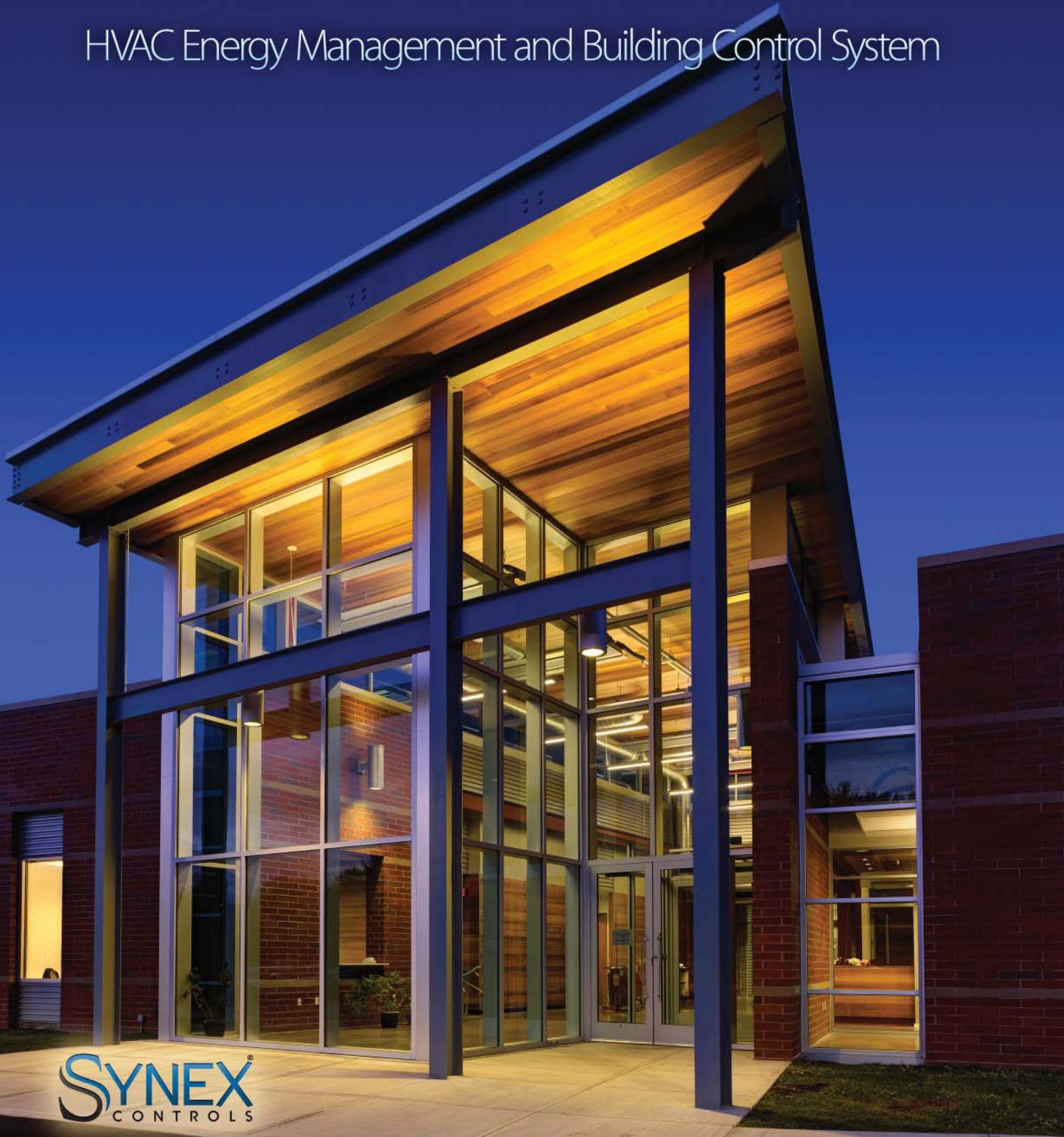


SPOTLIGHT™

HVAC Energy Management and Building Control System



SYNEX
CONTROLS

SPOTLIGHT™

HVAC Energy Management System

Spotlight coordinates the complex tasks required by a building's heating, cooling, fresh air, humidification and lighting systems resulting in increased efficiencies.

OVERVIEW

- HEATING

Heating, ventilation and air conditioning (HVAC) systems typically represent the largest use of energy in commercial and institutional buildings. Optimizing HVAC component performance will have a significant impact on building operating costs. The majority of energy management systems on the market today are "one-size-fits-all" products for major applications, with substantial up-front investment costs. With long waits to recoup on initial investments and products that don't necessarily match the unique needs of small or mid-sized facilities, the incentives may be lacking for the addition of energy management strategies.

- COOLING

- MAKE-UP AIR

- HUMIDIFICATION

- LIGHTING

- FORECASTING

- EFFICIENCY

With that in mind, the engineering and programming team at Synex Controls has developed a customized solution, making building control achievable and affordable for small to mid-sized commercial, office buildings and manufacturing facilities – with product amenities tailored for the specific needs of each customer.

Spotlight offers complete package systematic integration of all HVAC building components, leveraging a small or mid-sized facility's individual assets and responding to its specialized needs. From industrial facilities to commercial and office buildings, Spotlight coordinates the complex tasks required by a building's heating, cooling, fresh air, humidification and lighting systems for increased efficiencies, lower operating costs, and simplified building oversight.



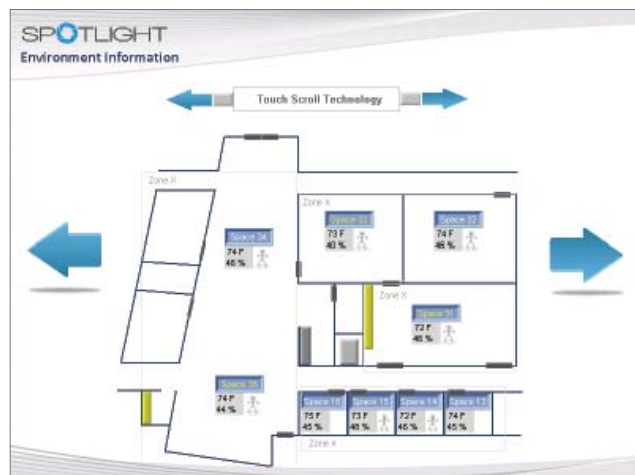
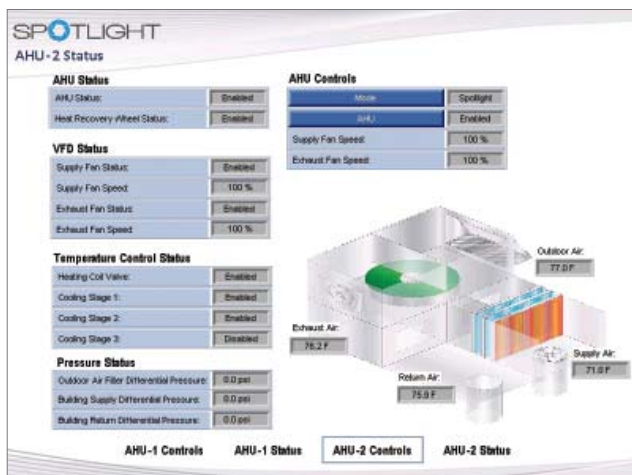
CONTROL CONCEPTS:

Spotlight ties together the independent HVAC components of your facility, allowing them to communicate and undergo monitoring in a centralized location. By working together instead of individually, the HVAC components may be called upon to meet the energy needs of the building more effectively. Spotlight monitors a wide range of environmental factors, building activities and occupancy levels, and selects the appropriate operating mode of each HVAC component to provide efficient heating and/or cooling levels based on the current climate conditions.

Flexible enough to adapt to any building needs, Spotlight offers exciting features that include:

- Predictive weather technology, including current and anticipated weather conditions assist in managing the heating and cooling loads of the facility.
- Customized energy recovery solutions to match the unique needs of each facility. This feature has the potential to make a significant impact on the energy costs and efficiencies of mid-sized commercial and industrial facilities where energy recovery and reuse is rarely captured, and often leads to higher than-necessary operating costs.
- Daily updating of sunrise/sunset times dictates lighting needs, both indoors and out, in the overall energy strategy.
- A web interface allows employees to interact on a personal level with the system to capture comfort preferences.
- Trending and reporting capabilities, including a sophisticated alert system, identify system problems.

Flexible enough to be installed in both new and existing buildings, the Spotlight package includes the hardware and software to coordinate operation of numerous HVAC components. Building comfort levels are easier to maintain, and significant energy savings can be realized.



- CONDENSING HYDRONIC SYSTEMS
- DOMESTIC HOT WATER
- HEAT RECOVERY
- DIRECT FIRED HEATERS
- RADIANT FLOORING

HEATING

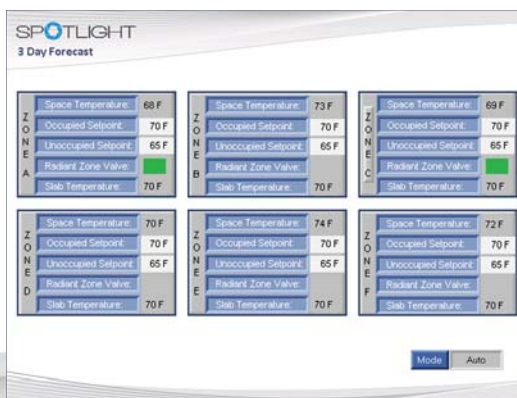
COOLING

- CHILLERS
- FLUID COOLERS
- COOLING TOWERS
- CHILLED BEAMS
- IT SERVER ROOMS

SPOTLIGHT

- MAKE-UP AIR CONDITIONING
- HUMIDITY
- VARIABLE VOLUME

AIR HANDLING



SPACE

- HEAT/COOL SETPOINT CONTROL
- OCCUPANCY
- SETBACK FUNCTIONS

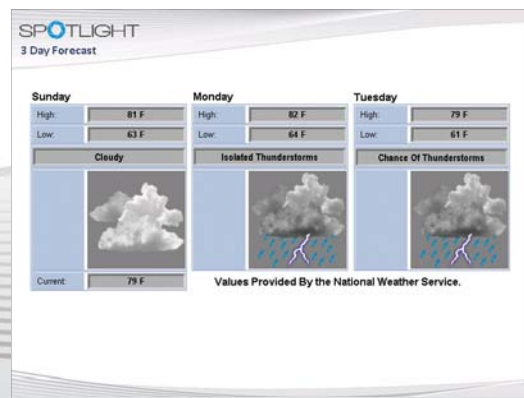
ENVIRONMENT

- FORECASTING
- CLIMATE ANTICIPATION
- RESET FUNCTIONS

LIGHTING

- SPACE OCCUPANCY
- AMBIENT LEVEL
- PARKING AREAS
- MANUFACTURING FACILITIES

OT
HT



SYNEX CONTROLS:

Synex Controls is an industry leader in developing energy management solutions and controls technology for heat transfer system markets. For additional information about Synex Controls products, please visit www.synexcontrols.com.



972 Centerville Road, Pulaski, NY 13142
Call: (315) 298-8555 • www.synexcontrols.com

spotlight-bro-2012-0814