

# inSite<sup>®</sup>

FOR MODSYNC

Remote monitoring and adjustment for  
any ModSync<sup>®</sup> controlled boiler plant



# inSite<sup>®</sup>

FOR MODSYNC

## Overview:

Boiler room and control system monitoring is now easier than ever with inSite. inSite has been designed to interface directly to a ModSync Sequencing System for remote monitoring and system access using any traditional web browser. No software to install or expensive licensing fees are required.



Boiler system efficiency and performance are based on many variables. The ability to monitor the boiler system and make intelligent adjustments based on operational history is now available with inSite for ModSync.

Features of inSite for ModSync include:

- Real-Time System Access
- Trending and Performance Monitoring
- Alarm Status and History
- Text Message/E-mail Alerts
- Access System through iPhone<sup>®</sup> App
- ModSync Variable/Software Updates



## Interface:

The inSite system can be configured with either a LAN (Local Area Network) or wireless (cellular) carrier connection depending on the application. Information is automatically updated, so web browser page refreshes are not required. The inSite's hardware design also allows for the ModSync logic to be updated remotely as updates and new features are added.



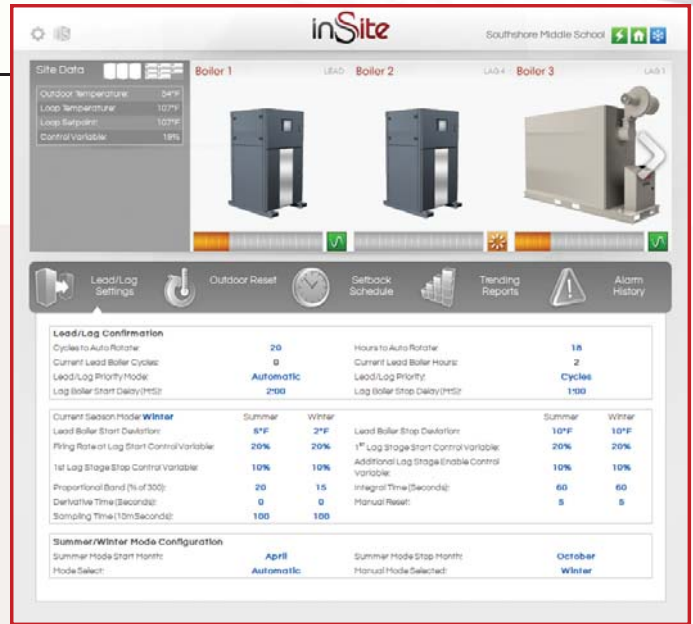


## Real-Time System Access:

inSite gives you real time information of system status and performance that can be easily adjusted from any traditional web browser. Smartphone compatibility provides another solution for monitoring and adjusting system variables from virtually anywhere.

**Lead / Lag Settings:** Optimization logic of boiler lead/lag position keeps a consistent number of cycles/run hours across all stages.

**Setback Scheduling:** The loop setpoint can be configured to change based on occupancy of the building. This allows for automatic switchover to lower operating temperatures during off hours such as nights, weekends and holidays.



## System Performance:

Monitoring system performance is one of the key variables associated with efficiency. Being able to adjust the variables that control how the system responds is another. The inSite for ModSync provides the ability to do both.

**Trending and Performance:** Key variables such as Supply Temperature, Return Temperature and Setpoint can be trended to show system response and performance data.

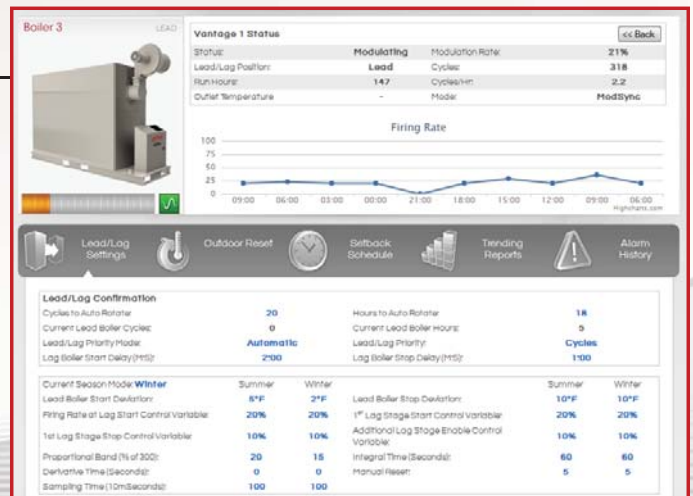
**Outdoor Reset:** This feature is used to automatically adjust the hydronic loop setpoint based on outdoor temperature. Warmer outdoor temperatures lower the hydronic loop setpoint, increasing system efficiency. The outdoor reset schedule can easily be adjusted through the inSite interface.



## System Status:

inSite provides an intuitive look into each component of the boiler system. Current status, operational history, maintenance schedules and alarm history are easily viewed. Alarm conditions are communicated with an icon display and text description of the current alarm. The Alarm History provides a Time/Date stamp of any recent alarm conditions.

**Text Message and Email Alerts:** A text message can be sent to as many as five numbers if an alarm condition occurs.





## ModSync® Sequencing System:

ModSync sets the new standard for boiler sequencing controls. With updated control philosophies and a user-friendly interface, ModSync is designed to maximize the efficiency of any multiple boiler system.

The flexibility of the ModSync logic allows for unique control algorithms to be developed to meet the most demanding system design requirements. ModSync has been designed to maximize the efficiency of your boiler or heater system, but it doesn't stop there. ModSync will simplify your system management with a wide array of features. Go to [www.synexcontrols.com](http://www.synexcontrols.com) to see how we can help your system reach its highest efficiency potential.



MODSYNC				BOILER STATUS			
Information	System Status	Logging	Configuration	[Three boiler icons]			
Outdoor Reset	Setback Schedule	Trends					
Preventive Maintenance	Alarm Status	System Configuration					
Current Status				Boiler 1	Boiler 2	Boiler 3	
Outdoor Temperature:	-500 F	Boiler Status:	Manual	Boiler Status:	Manual	Boiler Status:	Manual
Supply Temperature:	-500 F	Firing Rate:	999 %	Firing Rate:	999 %	Firing Rate:	999 %
Temperature Setpoint:	-500 F	Pump:	Running	Pump:	Running	Pump:	Running
Control Variable:	-500 %	BTU/h:	99999 BTU/h	BTU/h:	99999 BTU/h	BTU/h:	99999 BTU/h



972 Centerville Road, Pulaski, NY 13142  
Call: (315) 298-8555 • [www.synexcontrols.com](http://www.synexcontrols.com)

inSite-bro-2011-1208